




ORCHESTRA of LIGHTS™

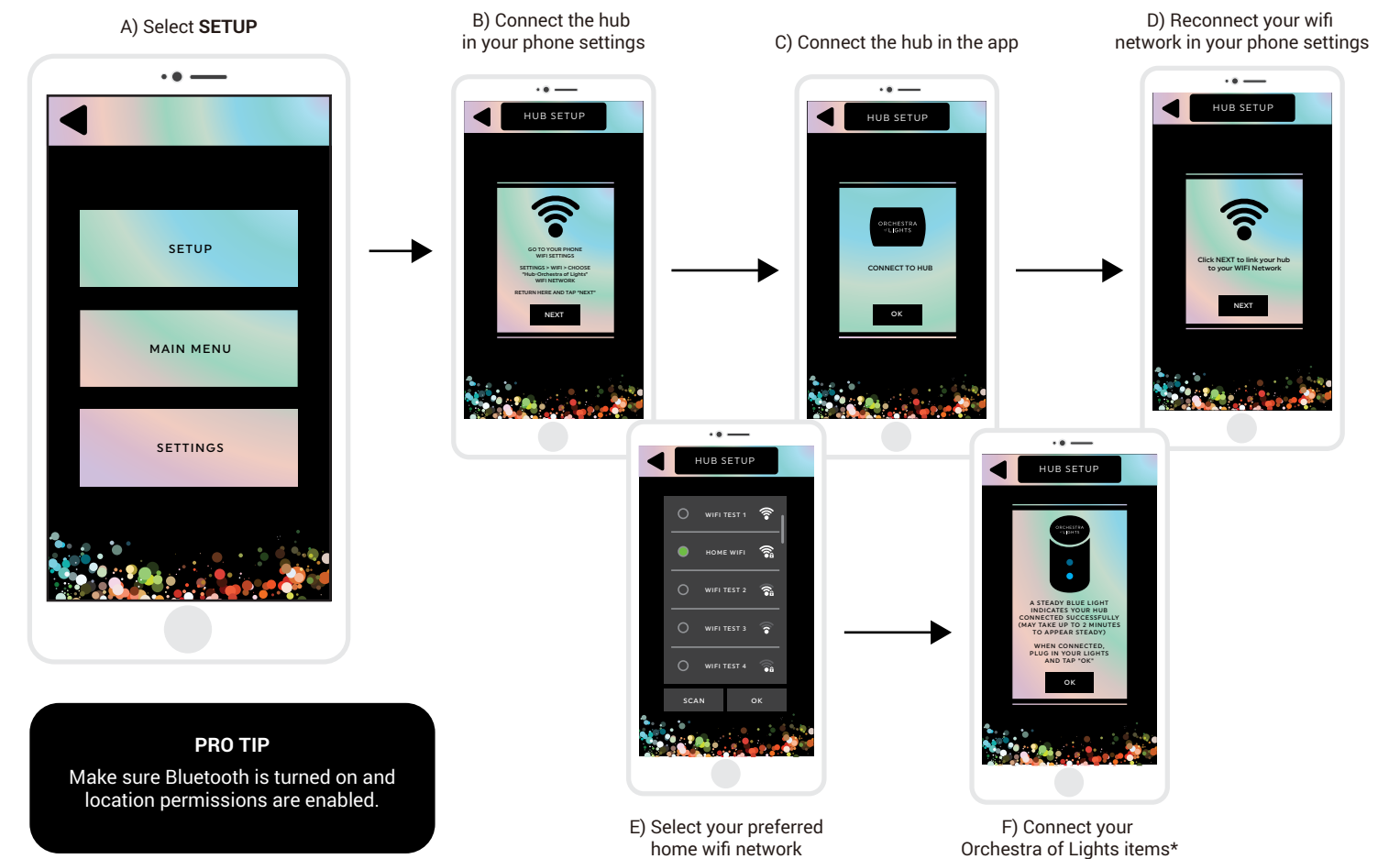
Quick Start Guide

Get Started

Learn more and get started with your Orchestra of Lights™ app

Thank you for purchasing Orchestra of Lights™! This Quick Start Guide is intended to provide an overview. For more details, please visit OrchestraOfLights.com. Enjoy your ultimate holiday light show!

- 1** Download the app

 
- 2** Plug in the Orchestra of Lights™ WiFi Hub
(Requires only ONE Hub for entire light show)
- 3** Link the Hub
Using your smartphone, open settings and go to WiFi selections. Select “Hub-Orchestra of Lights”. Next, open the Orchestra of Lights™ app and select **SETUP**.



Smartphone Compatibility

Android: 4.3 or higher version, supporting 4.0 Bluetooth, iOS 9.0 or higher version

iPhone: iPhone 4s or higher version

iPad/iPod: iPad 3, iPad mini (1,2,3,4 series), iPad Air (1,2 series), iPad Pro, iPod touch (5 Series)

Depending on your device, there could be a delay of 10-30 seconds before Orchestra of Lights™ fully syncs.

For more details, visit OrchestraOfLights.com

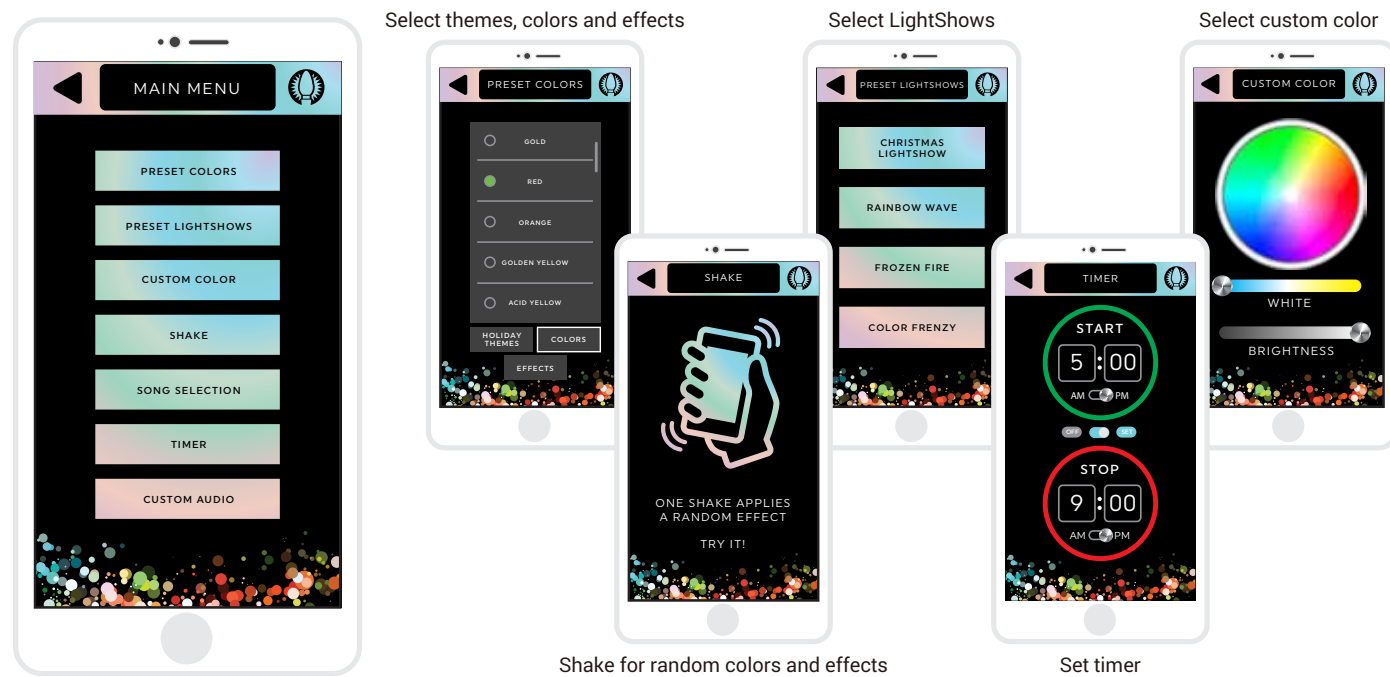
For technical issues, please contact Gemmy Industries customer service BEFORE returning the product by calling **800-274-6717**.

Musical Light Show

Learn about lighting and music options

Plug in your Orchestra of Lights™ products and wait for them to automatically sync with the Hub. This could take a few minutes. Lights will flash white and begin the Christmas Light Show when successfully connected to the Hub.

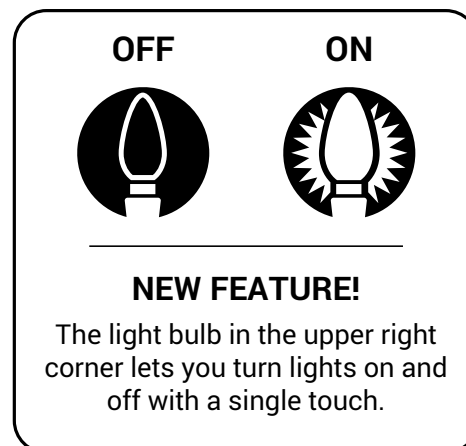
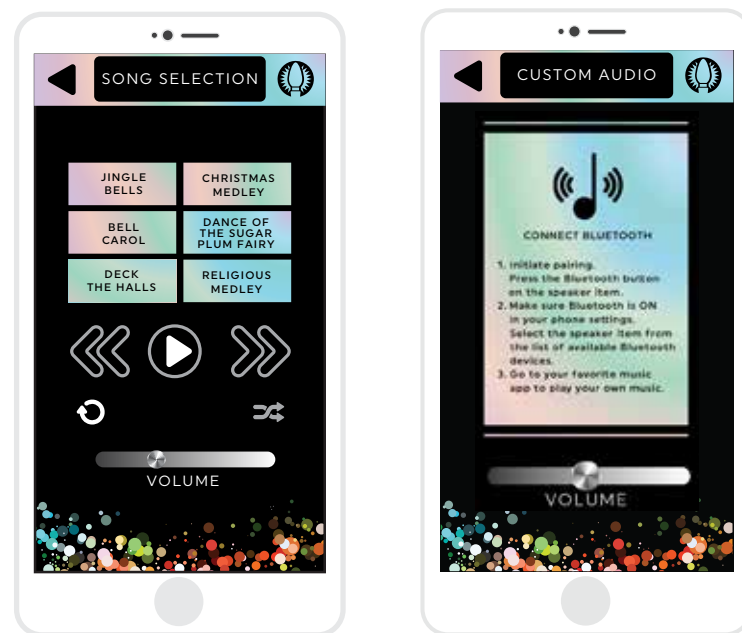
Now for the fun part! Orchestra of Lights™ offers multiple themes, colors, effects and preprogrammed light shows. Browse through your options then apply selections to each product to create your ultimate holiday light show. Additionally, with the Light Show Box with Speaker, you can incorporate your existing lights and decor to coordinate with the Light Show.



To enjoy music and beat detection with Orchestra of Lights™, you must have at least one item with speaker capability:

LED Projection™ Set with 3 Spotlights and Speaker 🎵 Item #1290082 Model #116413
LED Projection™ Set with 5 Spotlights and Speaker 🎵 Item #1290083 Model #116414
Light Show Box with Speaker 🎵 Item #1290087 Model #116412

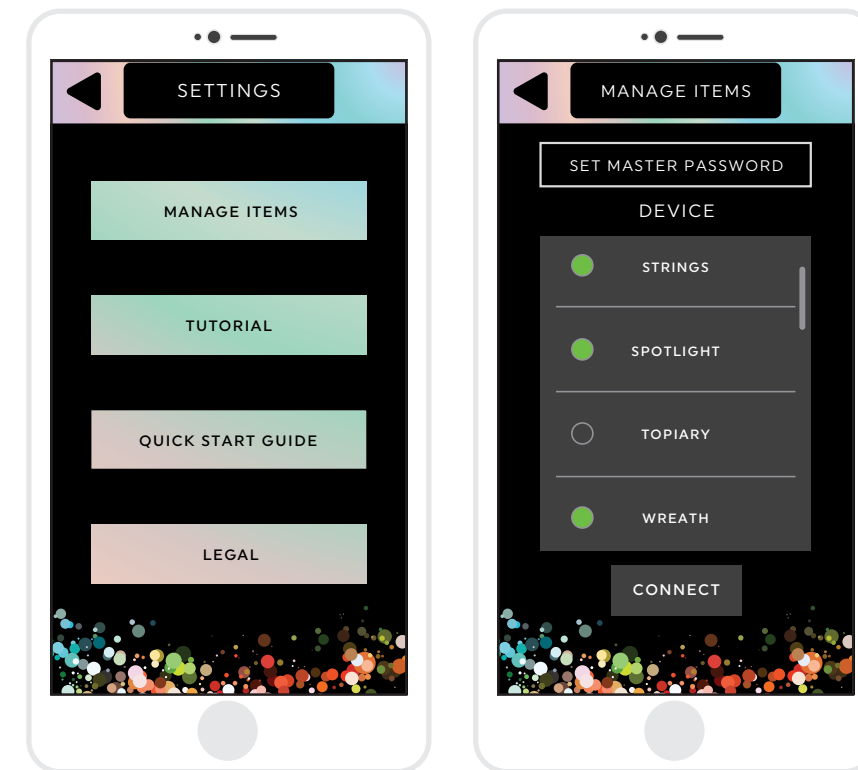
Your light show is programmed with 6 built-in songs. Or, watch the lights dance to your own music with Bluetooth technology.



Help & Products

Ensure your products are connected

Once plugged in, your products should automatically sync to the Hub (as long as the Hub has been properly set up). To check if a product is connected to the Hub, go to **SETTINGS > MANAGE ITEMS** and look for the green circle.



PRO TIP
A green dot indicates an item is successfully connected. If not, select and reconnect.

For additional information about Orchestra of Lights™ products, please visit OrchestraOfLights.com.

Orchestra of Lights™ products:

Projection Lighting *
LED Projection™ Set with 3 Spotlights and Speaker 🎵 Item #1290082 Model #116413
LED Projection™ Set with 5 Spotlights and Speaker 🎵 Item #1290083 Model #116414
Light Strings
24 LED Icicle Lights (9" 7" 5") Item #1290084 Model #116416
24 LED C9 Lights Item #1290085 Model #116409

Yard Décor
8 LED Candy Cane Pathway Stakes Item #1041153 Model #112863
LED Lighted Wreath Item #1041141 Model #112855
LED Lighted Garland Item #1290089 Model #116405
Speakers
Light Show Box with Speaker 🎵 Item #1290087 Model #116412

WiFi Hub Item #1041156 Model #114357



Requires only ONE Hub for entire light show

🎵 Item with a speaker

* Projection Lighting offers slightly fewer light options than light strings and decor, but uses colors specially designed to coordinate beautifully with your light show

©2019 GEMMY INDUSTRIES CORP
117 Wrangler Drive, Suite 100
Coppell, TX 75019 U.S.A
MADE IN CHINA

iPhone is a registered trademark of Apple Inc. registered in the US and other countries. Google Play is a registered trademark of Google Inc. registered in the US and other countries. The Bluetooth® word mark and logos are registered trademarks owned by Bluetooth SIG, Inc. and any use of such marks by Gemmy Industries Corp. is under license. Orchestra of Lights™ is a trademark of Gemmy Industries Corp. The Orchestra of Lights™ app may be updated periodically without prior notice. Check the App Store or Google Play Store for the most updated version.

For more details, visit OrchestraOfLights.com

For technical issues, please contact Gemmy Industries customer service BEFORE returning the product by calling 800-274-6717.

For more details, visit OrchestraOfLights.com

For technical issues, please contact Gemmy Industries customer service BEFORE returning the product by calling 800-274-6717.